

Solutions to JEE(Main)-2020

Test Date: 9th January 2020 (Second Shift)

PHYSICS, CHEMISTRY & MATHEMATICS

Paper - 1

Time Allotted: 3 Hours

Maximum Marks: 300

- Please read the instructions carefully. You are allotted 5 minutes specifically for this purpose.

Important Instructions:

1. The test is of **3 hours** duration.
2. This **Test Paper** consists of **75** questions. The maximum marks are **300**.
3. There are **three** parts in the question paper A, B, C consisting of **Physics, Chemistry** and **Mathematics** having 25 questions in each part of equal weightage out of which 20 questions are MCQs and 5 questions are numerical value based. Each question is allotted **4 (four)** marks for correct response.
4. **(Q. No. 01 – 20, 26 – 45, 51 – 70)** contains 60 multiple choice questions which have **only one correct answer**. Each question carries **+4 marks** for correct answer and **-1 mark** for wrong answer.
5. **(Q. No. 21 – 25, 46 – 50, 71 – 75)** contains 15 Numerical based questions with answer as numerical value. Each question carries **+4 marks** for correct answer. There is no negative marking.
6. Candidates will be awarded marks as stated above in **instruction No.3** for correct response of each question. One mark will be deducted for indicating incorrect response of each question. No deduction from the total score will be made if no response is indicated for an item in the answer box.
7. There is only one correct response for each question. Marked up more than one response in any question will be treated as wrong response and marked up for wrong response will be deducted accordingly as per **instruction 6** above.

PART – A (PHYSICS)

1. A small spherical droplet of density d is floating exactly half immersed in a liquid of density ρ and surface tension T . The radius of the droplet is (take note that the surface tension applies an upward force on the droplet):

(A) $r = \sqrt{\frac{3T}{(2d - \rho)g}}$	(B) $r = \sqrt{\frac{T}{(d - \rho)g}}$
(C) $r = \sqrt{\frac{2T}{3(d + \rho)g}}$	(D) $r = \sqrt{\frac{T}{(d + \rho)g}}$

2. There is a small source of light at some depth below the surface of water (refractive index = $\frac{4}{3}$) in a tank of large cross sectional surface area. Neglecting any reflection from the bottom and absorption by water, percentage of light that emerges out of surface is (nearly):
 [Use the fact that surface area of spherical cap of height h and radius of curvature r is $2\pi rh$]

(A) 21%	(B) 17%
(C) 50%	(D) 34%

3. For the four sets of three measured physical quantities as given below. Which of the following options is correct?
 - (i) $A_1 = 24.36, B_1 = 0.0724, C_1 = 256.2$
 - (ii) $A_2 = 24.44, B_2 = 16.082, C_2 = 240.2$
 - (iii) $A_3 = 25.2, B_3 = 19.2812, C_3 = 236.183$
 - (iv) $A_4 = 25, B_4 = 236.191, C_4 = 19.5$

(A) $A_4 + B_4 + C_4 < A_1 + B_1 + C_1 = A_2 + B_2 + C_2 = A_3 + B_3 + C_3$	
(B) $A_1 + B_1 + C_1 < A_3 + B_3 + C_3 < A_2 + B_2 + C_2 < A_4 + B_4 + C_4$	
(C) $A_1 + B_1 + C_1 = A_2 + B_2 + C_2 = A_3 + B_3 + C_3 = A_4 + B_4 + C_4$	
(D) $A_4 + B_4 + C_4 < A_1 + B_1 + C_1 < A_3 + B_3 + C_3 < A_2 + B_2 + C_2$	

4. A plane electromagnetic wave is propagating along the direction $\frac{\hat{i} + \hat{j}}{\sqrt{2}}$, with its polarization along the direction \hat{k} . The correct form of the magnetic field of the wave would be (here B_0 is an appropriate constant)

(A) $B_0 \frac{\hat{j} - \hat{i}}{\sqrt{2}} \cos\left(\omega t + k \frac{\hat{i} + \hat{j}}{\sqrt{2}}\right)$	(B) $B_0 \hat{k} \cos\left(\omega t - k \frac{\hat{i} + \hat{j}}{\sqrt{2}}\right)$
(C) $B_0 \frac{\hat{i} - \hat{j}}{\sqrt{2}} \cos\left(\omega t - k \frac{\hat{i} + \hat{j}}{\sqrt{2}}\right)$	(D) $B_0 \frac{\hat{i} + \hat{j}}{\sqrt{2}} \cos\left(\omega t - k \frac{\hat{i} + \hat{j}}{\sqrt{2}}\right)$

5. A wire of length L and mass per unit length $6.0 \times 10^{-3} \text{ kg m}^{-1}$ is put under tension of 540 N. Two consecutive frequencies that it resonates at are: 420 Hz and 490 Hz. Then L in meters is

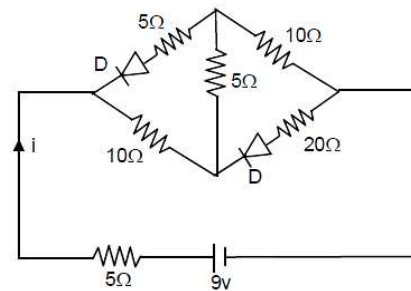
(A) 1.1 m	(B) 5.1 m
(C) 2.1 m	(D) 8.1 m

6. A particle of mass m is projected with a speed u from the ground at an angle $\theta = \frac{\pi}{3}$ w.r.t. horizontal (x -axis). When it has reached its maximum height, it collides completely inelastically with another particle of the same mass and velocity $u\hat{i}$. The horizontal distance covered by the combined mass before reaching the ground is:
- (A) $\frac{5}{8} \frac{u^2}{g}$ (B) $\frac{3\sqrt{2}}{4} \frac{u^2}{g}$ (C) $\frac{3\sqrt{3}}{8} \frac{u^2}{g}$ (D) $2\sqrt{2} \frac{u^2}{g}$

7. In LC circuit the inductance $L = 40$ mH and capacitance $C = 100$ μ F. If a voltage $V(t) = 10 \sin(314 t)$ is applied to the circuit, the current in the circuit is given as
- (A) $5.2 \cos 314 t$ (B) $0.52 \sin 314 t$
 (C) $0.52 \cos 314 t$ (D) $10 \cos 314 t$

8. Two gases argon (atomic radius 0.07 nm, atomic weight 40) and xenon (atomic radius 0.1 nm, atomic weight 140) have the same number density and are at the same temperature. The ratio of their respective mean free times is closest to:
- (A) 1.83 (B) 2.3
 (C) 3.67 (D) 4.67

9. The current i in the network is:
- (A) 0.6 A
 (B) 0 A
 (C) 0.2 A
 (D) 0.3 A



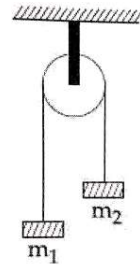
10. A rod of length L has non-uniform linear mass density given by $\rho(x) = a + b\left(\frac{x}{L}\right)^2$, where a and b are constants and $0 \leq x \leq L$. The value of x for the centre of mass of the rod is at:

- (A) $\frac{3}{2} \left(\frac{a+b}{2a+b} \right) L$ (B) $\frac{4}{3} \left(\frac{a+b}{2a+3b} \right) L$
 (C) $\frac{3}{4} \left(\frac{2a+b}{3a+b} \right) L$ (D) $\frac{3}{2} \left(\frac{2a+b}{3a+b} \right) L$

11. Two steel wires having same length are suspended from a ceiling under the same load. If the ratio of their energy stored per unit volume is 1 : 4, the ratio of their diameters is
- (A) $1 : \sqrt{2}$ (B) 2 : 1 (C) $\sqrt{2} : 1$ (D) 1 : 2

12. Planet A has mass M and radius R . Planet B has half the mass and half the radius of Planet A. If the escape velocities from the planets A and B are v_A and v_B , respectively, then $\frac{v_A}{v_B} = \frac{n}{4}$. The value of 'n' is:
- (A) 2 (B) 1 (C) 4 (D) 3

13. A uniformly thick wheel with moment of inertia I and radius R is free to rotate about its centre of mass (see fig). A massless string is wrapped over its rim and two blocks of masses m_1 and m_2 ($m_1 > m_2$) are attached to the ends of the string. The system is released for rest. The angular speed of the wheel when m_1 descends by a distance h is:



- (A) $\left[\frac{2(m_1 + m_2)gh}{(m_1 + m_2)R^2 + 1} \right]^{\frac{1}{2}}$ (B) $\left[\frac{2(m_1 - m_2)gh}{(m_1 + m_2)R^2 + 1} \right]^{\frac{1}{2}}$
 (C) $\left[\frac{(m_1 - m_2)}{(m_1 + m_2)R^2 + 1} \right]^{\frac{1}{2}} gh$ (D) $\left[\frac{(m_1 + m_2)}{(m_1 + m_2)R^2 + 1} \right]^{\frac{1}{2}} gh$

14. The energy required to ionize a hydrogen like ion in its ground state is 9 Rydbergs. What is the wavelength of the radiation emitted when the electron in this ion jumps from the second excited state to the ground state?

- (A) 11.4 nm (B) 35.8 nm
 (C) 24.2 nm (D) 8.6 nm

15. An electron of mass m and magnitude of charge $|e|$ initially at rest gets accelerated by a constant electric field E . The rate of change of de-Broglie wavelength of this electron at time t ignoring relativistic effects is

- (A) $\frac{|e|Et}{h}$ (B) $-\frac{h}{|e|Et}$
 (C) $-\frac{h}{|e|E\sqrt{t}}$ (D) $-\frac{h}{|e|Et^2}$

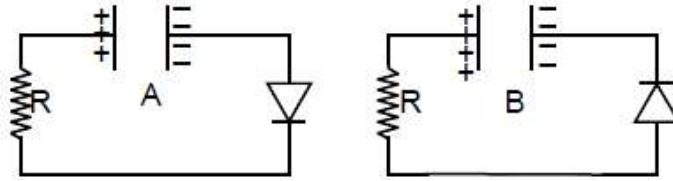
16. A particle starts from the origin at $t = 0$ with an initial velocity of $3.0 \hat{i}$ m/s and moves in the x - y plane with a constant acceleration $(6.0 \hat{i} + 4.0 \hat{j})$ m/s². The x -coordinate of the particle at the instant when its y -coordinate is 32 m is D meters. The value of D is

- (A) 40 (B) 60
 (C) 32 (D) 50

17. A small circular loop of conducting wire has radius a and carries current I . It is placed in a uniform magnetic field B perpendicular to its plane such that when rotated slightly about its diameter and released, it starts performing simple harmonic motion of time period T . If the mass of the loop is m then:

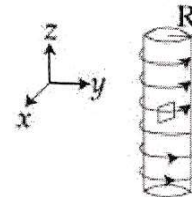
- (A) $T = \sqrt{\frac{\pi m}{IB}}$ (B) $T = \sqrt{\frac{\pi m}{2IB}}$
 (C) $T = \sqrt{\frac{2\pi m}{IB}}$ (D) $T = \sqrt{\frac{2m}{IB}}$

18. Two identical capacitors A and B, charged to the same potential 5V are connected in two different circuits as shown below at time $t = 0$. If the charge on capacitors A and B at time $t = CR$ is Q_A and Q_B respectively, then (Here e is the base of natural logarithm)



- (A) $Q_A = VC, Q_B = CV$ (B) $Q_A = \frac{VC}{e}, Q_B = \frac{CV}{2}$
 (C) $Q_A = VC, Q_B = \frac{VC}{e}$ (D) $Q_A = \frac{VC}{2}, Q_B = \frac{VC}{e}$

19. An electron gun is placed inside a long solenoid of radius R on its axis. The solenoid has n turns/length and carries a current I . The electron gun shoots an electron along the radius of the solenoid with speed v . If the electron does not hit the surface of the solenoid, maximum possible value of v is (all symbols have their standard meaning):

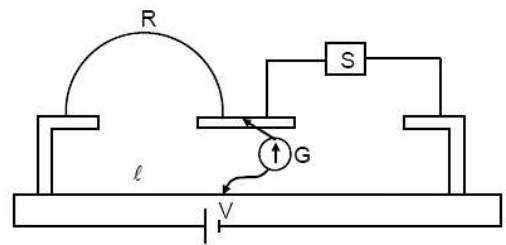


- (A) $\frac{2e\mu_0 nIR}{m}$ (B) $\frac{e\mu_0 nIR}{m}$ (C) $\frac{e\mu_0 nIR}{4m}$ (D) $\frac{e\mu_0 nIR}{2m}$

20. A spring mass system (mass m , spring constant k and natural length ℓ) rests in equilibrium on a horizontal disc. The free end of the spring is fixed at the centre of the disc. If the disc together with spring mass system, rotates about its axis with an angular velocity ω , ($k \gg m\omega^2$) the relative change in the length of the spring is best given by the option:

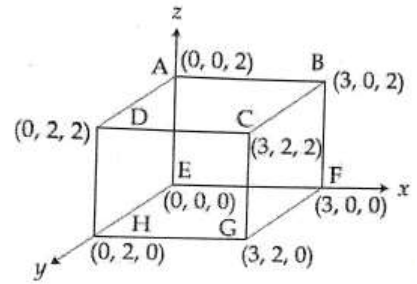
- (A) $\frac{m\omega^2}{3k}$ (B) $\frac{m\omega^2}{k}$ (C) $\frac{2m\omega^2}{3k}$ (D) $\sqrt{\frac{2}{3}} \left(\frac{m\omega^2}{k} \right)$

21. In a meter bridge experiment S is a standard resistance. R is a resistance wire. It is found that balancing length is $\ell = 25$ cm. If R is replaced by a wire of half length and half diameter that of R of same material, then the balancing distance ℓ' (in cm) will now be _____.



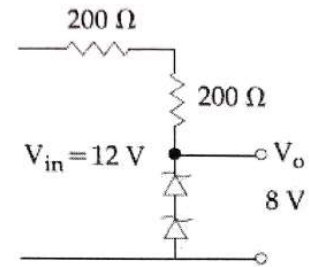
22. Starting at temperature 300 K, one mole of an ideal diatomic gas ($\gamma = 1.4$) is first compressed adiabatically from volume V_1 to $V_2 = \frac{V_1}{16}$. It is then allowed to expand isobarically to volume $2V_2$. If all the processes are the quasi-static then the final temperature of the gas (in $^\circ\text{K}$) is (to the nearest integer) _____.

23. An electric field $\vec{E} = 4x\hat{i} - (y^2 + 1)\hat{j}$ N/C passes through the box shown in figure. The flux of the electric field through surfaces ABCD and BCGF are marked as ϕ_I and ϕ_{II} respectively. The difference between $(\phi_I - \phi_{II})$ is (in Nm^2/C) _____.



24. In a Young's double's slit experiment 15 fringes are observed on a small portion of the screen when light of wavelength 500 nm is used. Ten fringes are observed on the same section of the screen when another light source of wavelength λ is used. Then the value of λ is (in nm) _____.

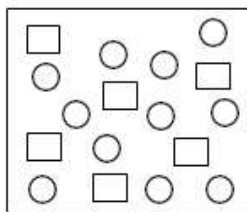
25. The circuit as shown in figure is working as a 8 V dc regulated voltage source. When 12 V is used as input, the power dissipated (in mW) in each diode is (considering both zener diodes are identical) _____.



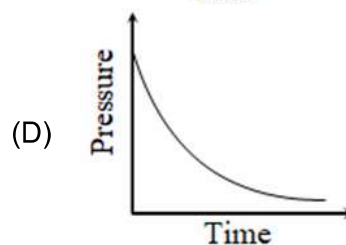
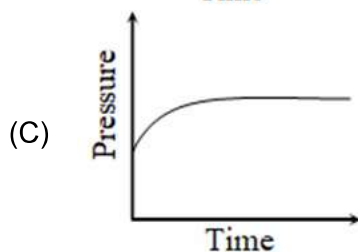
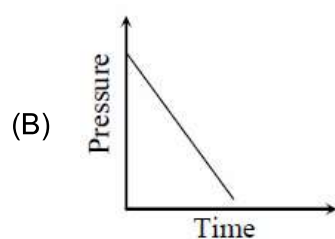
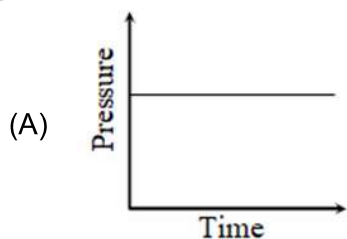
PART –B (CHEMISTRY)

26. Amongst the following, the form of water with the lowest ionic conductance at 298 K is :
(A) sea water
(B) distilled water
(C) saline water used for intravenous injection
(D) water from a well
27. The correct order of the spin-only magnetic moments of the following complexes is :
(I) $[\text{Cr}(\text{H}_2\text{O})_6]\text{Br}_2$ (II) $\text{Na}_4[\text{Fe}(\text{CN})_6]$
(III) $\text{Na}_3[\text{Fe}(\text{C}_2\text{O}_4)_3](\text{D}0 > \text{P})$ (IV) $(\text{Et}_4\text{N})_2[\text{CoCl}_4]$
(A) (I) > (IV) > (III) > (II) (B) (II) » (I) > (IV) > (III)
(C) (III) > (I) > (IV) > (II) (D) (III) > (I) > (II) > (IV)
28. Which polymer has 'chiral' monomer(s)?
(A) Nylon 6, 6 (B) Neoprene
(C) PHBV (D) Buna-N
29. The first and second ionisation enthalpies of a metal are 496 and 4560 kJ mol^{-1} , respectively. How many moles of HCl and H_2SO_4 , respectively, will be needed to react completely with 1 mole of the metal hydroxide ?
(A) 1 and 1 (B) 1 and 2
(C) 2 and 0.5 (D) 1 and 0.5
30. Among the statements (a) – (d), the correct ones are:
(a) Lithium has the highest hydration enthalpy among the alkali metals.
(b) Lithium chloride is insoluble in pyridine.
(c) Lithium cannot form ethynide upon its reaction with ethyne
(d) Both lithium and magnesium react slowly with H_2O
(A) (a), (b) and (d) only (B) (a) and (d) only
(C) (b) and (c) only (D) (a), (c) and (d) only
31. The solubility product of $\text{Cr}(\text{OH})_3$ at 298 K is 6.0×10^{-31} . The concentration of hydroxide ions in a saturated solution of $\text{Cr}(\text{OH})_3$ will be :
(A) $(18 \times 10^{-31})^{1/4}$ (B) $(4.86 \times 10^{-29})^{1/4}$
(C) $(18 \times 10^{-31})^{1/2}$ (D) $(2.22 \times 10^{-31})^{1/4}$
32. 5 g of zinc is treated separately with an excess of
(a) dilute hydrochloric acid and (b) aqueous sodium hydroxide.
The ratio of the volumes of H_2 evolved in these two reactions is : -
(A) 1 : 4 (B) 1 : 1
(C) 1 : 2 (D) 2 : 1

33. If the figure shown below reactant A (represented by square) is in equilibrium with product B (represented by circle). The equilibrium constant is:



- (A) 8
(B) 2
(C) 4
(D) 1
34. A mixture of gases O_2 , H_2 and CO are taken in a closed vessel containing charcoal. The graph that represents the correct behaviour of pressure with time is:



35. The number of sp^2 hybrid orbitals in a molecule of benzene is
(A) 18
(B) 6
(C) 12
(D) 24
36. Biochemical Oxygen Demand (BOD) is the amount of oxygen required (in ppm):
(A) for the photochemical breakdown of waste present in 1 m^3 volume of a water body.
(B) for sustaining life in a water body.
(C) by bacteria to break-down organic waste in a certain volume of a water sample.
(D) by anaerobic bacteria to breakdown inorganic waste present in a water body.
37. The true statement amongst the following is :
(A) S is a function of temperature but DS is not a function of temperature.
(B) Both DS and S are functions of temperature.
(C) S is not a function of temperature but DS is a function of temperature.
(D) Both S and DS are not functions of temperature

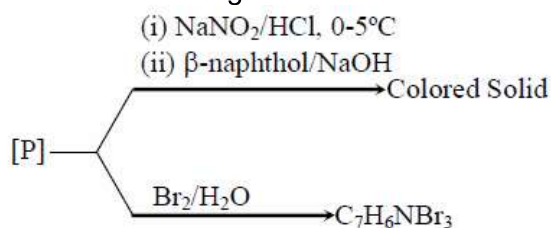
38. A, B and C are three biomolecules. The results of the tests performed on them are given below:

	Molisch's Test	Barfoed Test	Biuret Test
(A)	Positive	Negative	Negative
(B)	Positive	Positive	Negative
(C)	Negative	Negative	Positive

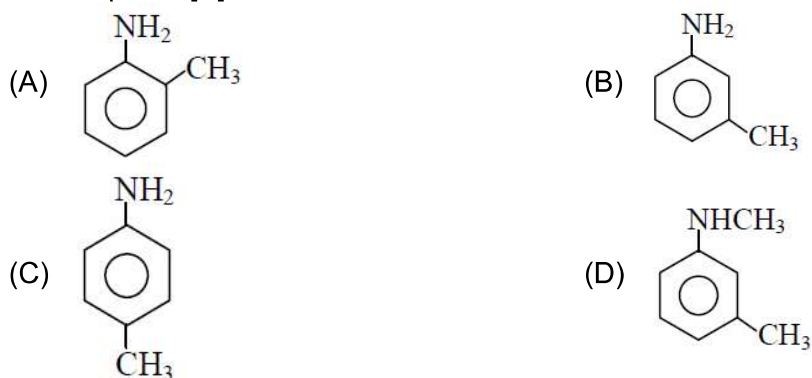
A, B and C are respectively:

- (A) A = Lactose, B = Glucose, C = Alanine (B) A = Lactose, B = Glucose, C = Albumin
 (C) A = Glucose, B = Fructose, C = Albumin (D) A = Lactose, B = Fructose, C = Alanine

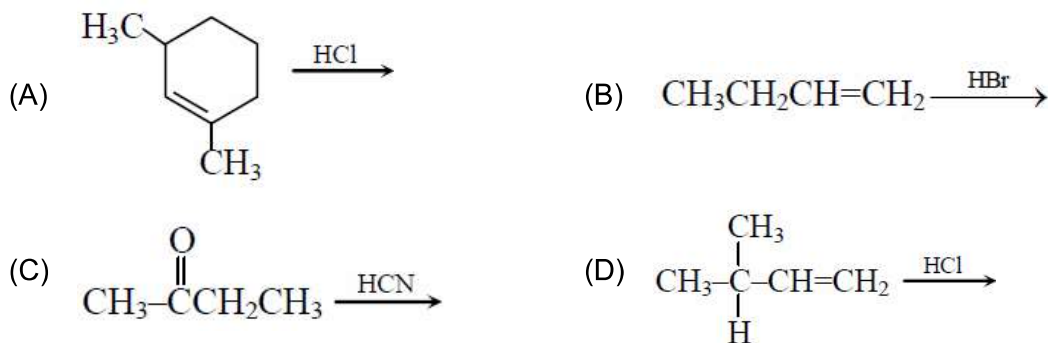
39. Consider the following reactions:



The compound [P] is



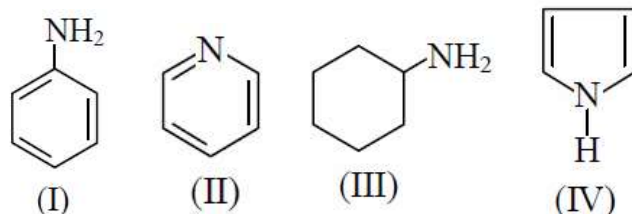
40. Which of the following reactions will not produce a racemic product?



41. Which of the following has the shortest C-Cl bond?



42. The decreasing order of basicity of the following amines is

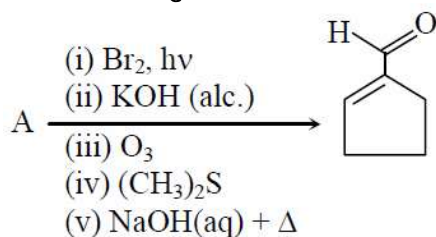


- (A) (III) > (I) > (II) > (IV) (B) (II) > (III) > (IV) > (I)
 (C) (I) > (III) > (IV) > (II) (D) (III) > (II) > (I) > (IV)

43. The reaction of $\text{H}_3\text{N}_3\text{B}_3\text{Cl}_3$ (A) with LiBH_4 in tetrahydrofuran gives inorganic benzene (B). Further, the reaction of (A) with (C) leads to $\text{H}_3\text{N}_3\text{B}_3(\text{Me})_3$. Compounds (B) and (C) respectively, are:

- (A) Borazine and MeBr (B) Boron nitride and MeBr
 (C) Diborane and MeMgBr (D) Borazine and MeMgBr

44. In the following reaction A is :



- (A) (B)
 (C) (D)

45. The isomer (s) of $[\text{Co}(\text{NH}_3)_4\text{Cl}_2]$ that has/have a Cl – Co – Cl angle of 90° , is/are :

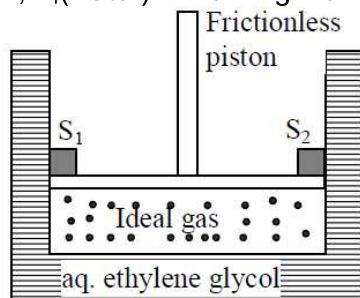
- (A) meridional and trans (B) cis only
 (C) trans only (D) cis and trans

46. The sum of the total number of bonds between chromium and oxygen atoms in chromate and dichromate ions is _____

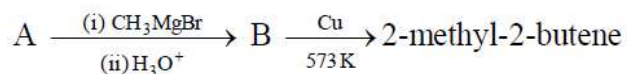
47. A sample of milk splits after 60 min. at 300 K and after 40 min. at 400 K when the population of *lactobacillus acidophilus* in it doubles. The activation energy (in kJ/mol) for this process is closest to _____

(Given, $R = 8.3 \text{ J mol}^{-1}\text{K}^{-1}$, $\ln\left(\frac{2}{3}\right) = 0.4$, $e^{-3} = 4.0$)

48. A Cylinder containing an ideal gas (0.1 mol of 1.0 dm^3) is in thermal equilibrium with a large volume of 0.5 molal aqueous solution of ethylene glycol at its freezing point. If the stoppers S_1 and S_2 (as shown in the figure) are suddenly withdrawn, the volume of the gas in litres after equilibrium is achieved will be _.
- (Given, $K_f(\text{water}) = 2.0 \text{ K kg mol}^{-1}$, $R = 0.08 \text{ dm}^3 \text{ atm K}^{-1} \text{ mol}^{-1}$)



49. Consider the following reactions



The mass percentage of carbon in A is_____.

50. 10.30 mg of O_2 is dissolved into a liter of sea water of density 1.03 g/mL . The concentration of O_2 in ppm is_____.

PART-C (MATHEMATICS)

51. If $x = \sum_{n=0}^{\infty} (-1)^n \tan^{2n} \theta$ and $y = \sum_{n=0}^{\infty} \cos^{2n} \theta$, for $0 < \theta < \frac{\pi}{4}$, then:
- (A) $y(1-x) = 1$ (B) $y(1+x) = 1$
 (C) $x(1+y) = 1$ (D) $x(1-y) = 1$
52. If $p \rightarrow (p \wedge \sim q)$ is false, then the truth values of p and q are respectively:
- (A) F, T (B) F, F
 (C) T, T (D) T, F
53. Let $a, b \in \mathbb{R}, a \neq 0$ be such that the equation $ax^2 - 2bx + 5 = 0$ has a repeated root α , which is also a root of the equation, $x^2 - 2bx - 10 = 0$. If β is the other root of this equation, then $\alpha^2 + \beta^2$ is equal to:
- (A) 28 (B) 24
 (C) 26 (D) 25
54. Let $[t]$ denote the greatest integer $\leq t$ and $\lim_{x \rightarrow 0} x \left[\frac{4}{x} \right] = A$. Then the function, $f(x) = [x^2] \sin(\pi x)$ is discontinuous, when x is equal to:
- (A) $\sqrt{A+21}$ (B) $\sqrt{A+5}$
 (C) \sqrt{A} (D) $\sqrt{A+1}$
55. Let a function $f : [0,5] \rightarrow \mathbb{R}$ be continuous, $f(1) = 3$ and F be defined as:
- $$F(x) = \int_1^x t^2 g(t) dt, \text{ where } g(t) = \int_1^t f(u) du.$$
- Then for the function F , the point $x = 1$ is:
- (A) a point of local minima (B) a point of inflection.
 (C) not a critical point (D) a point of local maxima
56. A random variable X has the following probability distribution:
- | | | | | | | |
|--------|---|-------|------|-----|------|--------|
| X | : | 1 | 2 | 3 | 4 | 5 |
| $P(X)$ | : | K^2 | $2K$ | K | $2K$ | $5K^2$ |
- Then $P(X > 2)$ is equal to:
- (A) $\frac{1}{36}$ (B) $\frac{7}{12}$
 (C) $\frac{23}{36}$ (D) $\frac{1}{6}$

57. If $\int \frac{d\theta}{\cos^2 \theta (\tan 2\theta + \sec 2\theta)} = \lambda \tan \theta + 2 \log_e |f(\theta)| + C$ where C is a constant of

integration, then the ordered pair $(\lambda, f(\theta))$ is equal to:

- (A) $(-1, 1 + \tan \theta)$ (B) $(1, 1 - \tan \theta)$
 (C) $(1, 1 + \tan \theta)$ (D) $(-1, 1 - \tan \theta)$

58. If $\frac{dy}{dx} = \frac{xy}{x^2 + y^2}; y(1) = 1$; then a value of x satisfying $y(x) = e$ is:

- (A) $\sqrt{2}e$ (B) $\frac{1}{2}\sqrt{3}e$
 (C) $\sqrt{3}e$ (D) $\frac{e}{\sqrt{2}}$

59. Let a_n be the n^{th} term of a G.P. of positive terms. If $\sum_{n=1}^{100} a_{2n+1} = 200$ and $\sum_{n=1}^{100} a_{2n} = 100$,

then $\sum_{n=1}^{200} a_n$ is equal to:

- (A) 225 (B) 300
 (C) 150 (D) 175

60. If z be a complex number satisfying $|\operatorname{Re}(z)| + |\operatorname{Im}(z)| = 4$, then $|z|$ cannot be:

- (A) $\sqrt{\frac{17}{2}}$ (B) $\sqrt{10}$
 (C) $\sqrt{8}$ (D) $\sqrt{7}$

61. Given : $f(x) = \begin{cases} x, & 0 \leq x < \frac{1}{2} \\ \frac{1}{2}, & x = \frac{1}{2} \\ 1-x, & \frac{1}{2} < x \leq 1 \end{cases}$ and $g(x) = \left(x - \frac{1}{2}\right)^2, x \in \mathbb{R}$. Then the area (in sq.

units) of the region bounded by the curves, $y = f(x)$ and $y = g(x)$ between the lines $2x = 1$ and $2x = \sqrt{3}$, is:

- (A) $\frac{1}{3} + \frac{\sqrt{3}}{4}$ (B) $\frac{1}{2} + \frac{\sqrt{3}}{4}$
 (C) $\frac{\sqrt{3}}{4} - \frac{1}{3}$ (D) $\frac{1}{2} - \frac{\sqrt{3}}{4}$

62. In the expansion of $\left(\frac{x}{\cos\theta} + \frac{1}{x\sin\theta}\right)^{16}$, if l_1 is the least value of the term independent of x when $\frac{\pi}{16} \leq \theta \leq \frac{\pi}{8}$, then the ratio $l_2 : l_1$ is equal to:
- (A) 1 : 16 (B) 1 : 8
(C) 8 : 1 (D) 16 : 1
63. If 10 different balls are to be placed in 4 distinct boxes at random, then the probability that two of these boxes contain exactly 2 and 3 balls is:
- (A) $\frac{945}{2^{11}}$ (B) $\frac{945}{2^{10}}$
(C) $\frac{965}{2^{11}}$ (D) $\frac{965}{2^{10}}$
64. If $A = \{x \in \mathbb{R} : |x| < 2\}$ and $B = \{x \in \mathbb{R} : |x - 2| \geq 3\}$; then:
- (A) $B - A = \mathbb{R} - (-2, 5)$ (B) $A \cap B = (-2, -1)$
(C) $A - B = [-1, 2)$ (D) $A \cup B = \mathbb{R} - (2, 5)$
65. Let $a - 2b + c = 1$. If $f(x) = \begin{vmatrix} x+a & x+2 & x+1 \\ x+b & x+3 & x+2 \\ x+c & x+4 & x+3 \end{vmatrix}$, then:
- (A) $f(-50) = 501$ (B) $f(50) = 1$
(C) $f(50) = -501$ (D) $f(-50) = -1$
66. Let f and g be differentiable functions on \mathbb{R} such that $f \circ g$ is the identity function. If for some $a, b \in \mathbb{R}$, $g'(a) = 5$ and $g(a) = b$, then $f'(b)$ is equal to:
- (A) 1 (B) 5
(C) $\frac{1}{5}$ (D) $\frac{2}{5}$
67. If one end of a focal chord AB of the parabola $y^2 = 8x$ is at $A\left(\frac{1}{2}, -2\right)$, then the equation of the tangent to it at B is:
- (A) $2x - y - 24 = 0$ (B) $x - 2y + 8 = 0$
(C) $2x + y - 24 = 0$ (D) $x + 2y + 8 = 0$
68. If $x = 2\sin\theta - \sin 2\theta$ and $y = 2\cos\theta - \cos 2\theta$, $\theta \in [0, 2\pi]$, then $\frac{d^2y}{dx^2}$ at $\theta = \pi$ is:
- (A) $-\frac{3}{8}$ (B) $\frac{3}{2}$
(C) $\frac{3}{4}$ (D) $-\frac{3}{4}$

69. The length of the minor axis (along y – axis) of an ellipse in the standard form is $\frac{4}{\sqrt{3}}$. If

this ellipse touches the line, $x + 6y = 8$; then its eccentricity is:

- (A) $\frac{1}{3}\sqrt{\frac{11}{3}}$ (B) $\frac{1}{2}\sqrt{\frac{5}{3}}$
 (C) $\frac{1}{2}\sqrt{\frac{11}{3}}$ (D) $\sqrt{\frac{5}{6}}$

70. The following system of linear equation

$$7x + 6y - 2z = 0$$

$$3x + 4y + 2z = 0 \text{ has}$$

$$x - 2y - 6z = 0,$$

- (A) infinitely many solutions, (x, y, z) satisfying $x = 2z$.
 (B) no solution
 (C) only the trivial solution.
 (D) infinitely many solutions, (x, y, z) satisfying $y = 2z$.

71. If the curves, $x^2 - 6x + y^2 + 8 = 0$ and $x^2 - 8y + y^2 + 16 - k = 0$, ($k > 0$) touch each other at a point, then the largest value of k is _____.

72. If $C_r = {}^{25}C_r$ and $C_0 + 5.C_1 + 9.C_2 + \dots + (101).C_{25} = 2^{25}.k$, then k is equal to _____

73. Let \vec{a}, \vec{b} and \vec{c} be three vectors such that $|\vec{a}| = \sqrt{3}, |\vec{b}| = 5, \vec{b} \cdot \vec{c} = 10$ and the angle between \vec{b} and \vec{c} is $\frac{\pi}{3}$. If \vec{a} is perpendicular to the vector $\vec{b} \times \vec{c}$, then $|\vec{a} \times (\vec{b} \times \vec{c})|$ is equal to _____.

74. If the distance between the plane, $23x - 10y - 2z + 48 = 0$ and the plane $\frac{x+1}{2} = \frac{y-3}{4} = \frac{z+1}{3}$ and $\frac{x+3}{2} = \frac{y+2}{6} = \frac{z-1}{\lambda}$ ($\lambda \in \mathbb{R}$) is equal to $\frac{k}{\sqrt{633}}$, then k is equal to _____

75. The number of terms common to the two A.P.'s 3, 7, 11,407 and 2, 9, 16,709 is _____

JEE (Main) – 2020

ANSWERS

PART –A (PHYSICS)

1.	A	2.	B	3.	Bonus	4.	C
5.	C	6.	C	7.	C	8.	A
9.	D	10.	C	11.	C	12.	C
13.	B	14.	A	15.	D	16.	B
17.	C	18.	C	19.	D	20.	B
21.	40	22.	1819	23.	48	24.	750
25.	40						

PART –B (CHEMISTRY)

26.	B	27.	A	28.	C	29.	D
30.	D	31.	A	32.	B	33.	B
34.	D	35.	A	36.	C	37.	B
38.	B	39.	B	40.	D	41.	A
42.	D	43.	D	44.	B	45.	B
46.	12	47.	3.98	48.	2.18	49.	66.67
50.	10						

PART-C (MATHEMATICS)

51.	A	52.	C	53.	D	54.	D
55.	A	56.	C	57.	A	58.	C
59.	C	60.	D	61.	C	62.	D
63.	Bonus	64.	A	65.	B	66.	C
67.	B	68.	Bonus mark	69.	C	70.	A
71.	36	72.	51	73.	30	74.	3
75.	14						