

# Solutions to JEE(Main)-2020

Test Date: 7<sup>th</sup> January 2020 (First Shift)

## PHYSICS, CHEMISTRY & MATHEMATICS

Paper - 1

Time Allotted: 3 Hours

Maximum Marks: 300

- Please read the instructions carefully. You are allotted 5 minutes specifically for this purpose.

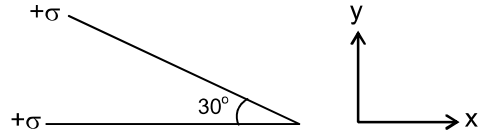
### **Important Instructions:**

1. The test is of **3 hours** duration.
2. This **Test Paper** consists of **75** questions. The maximum marks are **300**.
3. There are **three** parts in the question paper A, B, C consisting of **Physics, Chemistry** and **Mathematics** having 25 questions in each part of equal weightage out of which 20 questions are MCQs and 5 questions are numerical value based. Each question is allotted **4 (four)** marks for correct response.
4. **(Q. No. 01 – 20, 26 – 45, 51 – 70)** contains 60 multiple choice questions which have **only one correct answer**. Each question carries **+4 marks** for correct answer and **–1 mark** for wrong answer.
5. **(Q. No. 21 – 25, 46 – 50, 71 – 75)** contains 15 Numerical based questions with answer as numerical value. Each question carries **+4 marks** for correct answer. There is no negative marking.
6. Candidates will be awarded marks as stated above in **instruction No.3** for correct response of each question. One mark will be deducted for indicating incorrect response of each question. No deduction from the total score will be made if no response is indicated for an item in the answer box.
7. There is only one correct response for each question. Marked up more than one response in any question will be treated as wrong response and marked up for wrong response will be deducted accordingly as per **instruction 6** above.

## **PART – A (PHYSICS)**

1. A polarizer-analyser set is adjusted such that the intensity of light coming out of the analyser is just 10% of the original intensity. Assuming that the polarizer-analyser set does not absorb any light, the angle by which the analyser need to be rotated further to reduce the output intensity to be zero is  
 (A)  $18.4^\circ$  (B)  $45^\circ$   
 (C)  $71.6^\circ$  (D)  $90^\circ$

2. Two infinite planes each with uniform surface charge density  $+\sigma$  are kept in such a way that the angle between them is  $30^\circ$ . The electric field in the region shown between them is given by:

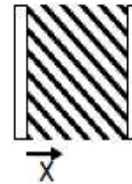


- (A)  $\frac{\sigma}{2\epsilon_0} \left[ \left(1 - \frac{\sqrt{3}}{2}\right) \hat{y} - \frac{\hat{x}}{2} \right]$  (B)  $\frac{\sigma}{2\epsilon_0} \left[ (1 + \sqrt{3}) \hat{y} - \frac{\hat{x}}{2} \right]$   
 (C)  $\frac{\sigma}{2\epsilon_0} \left[ (1 + \sqrt{3}) \hat{y} + \frac{\hat{x}}{2} \right]$  (D)  $\frac{\sigma}{\epsilon_0} \left[ \left(1 + \frac{\sqrt{3}}{2}\right) \hat{y} + \frac{\hat{x}}{2} \right]$

3. A long solenoid of radius  $R$  carries a time ( $t$ ) dependent current  $I(t) = I_0 t (1 - t)$ . A ring of radius  $2R$  is placed coaxially near its middle. During the time interval  $0 \leq t \leq 1$ , the induced current ( $I_R$ ) and the induced EMF ( $V_R$ ) in the ring changes as:  
 (A) At  $t = 0.25$  direction of  $I_R$  reverses and  $V_R$  is maximum.  
 (B) Direction of  $I_R$  remains unchanged and  $V_R$  is zero at  $t = 0.25$   
 (C) Direction of  $I_R$  remains unchanged and  $V_R$  is maximum at  $t = 0.5$   
 (D) At  $t = 0.5$  direction of  $I_R$  reverses and  $V_R$  is zero.

4. Visible light of wavelength  $6000 \times 10^{-8}$  cm falls normally on a single slit and produces a diffraction pattern. It is found that the second diffraction minimum is at  $60^\circ$  from the central maximum. If the first minimum is produced at  $\theta_1$  then  $\theta_1$  is close to:  
 (A)  $20^\circ$  (B)  $30^\circ$   
 (C)  $25^\circ$  (D)  $45^\circ$

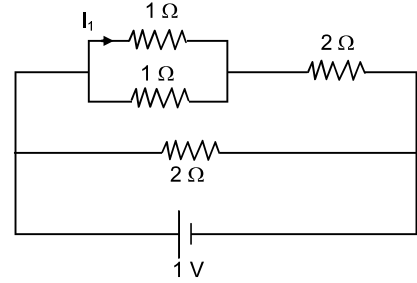
5. A parallel plate capacitor has plates of area  $A$  separated by distance ' $d$ ' between them. It is filled with a dielectric which has a dielectric constant that varies as  $k(x) = k(1 + \alpha x)$  where ' $x$ ' is the distance measured from one of the plates.



If  $(\alpha d) \ll 1$ , the total capacitance of the system is best given by the expression:

- (A)  $\frac{AK\epsilon_0}{d} \left(1 + \frac{\alpha d}{2}\right)$  (B)  $\frac{A\epsilon_0 K}{d} \left(1 + \frac{\alpha^2 d^2}{2}\right)$   
 (C)  $\frac{AK\epsilon_0}{d} (1 + \alpha d)$  (D)  $\frac{A\epsilon_0 K}{d} \left[1 + \left(\frac{\alpha d}{2}\right)^2\right]$

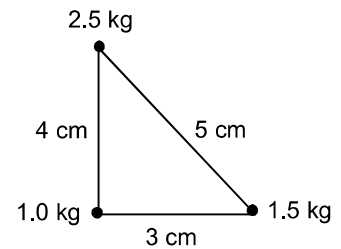
6. The current  $I_1$  (in A) flowing through  $1\ \Omega$  resistor in the following circuit is  
 (A) 0.25  
 (B) 0.4  
 (C) 0.2  
 (D) 0.5



7. The radius of gyration of a uniform rod of length  $\ell$ , about an axis passing through a point  $\frac{\ell}{4}$  away from the centre of the rod, an perpendicular to it is:

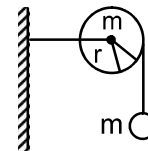
- (A)  $\frac{1}{8}\ell$  (B)  $\sqrt{\frac{7}{48}}\ell$   
 (C)  $\frac{1}{4}\ell$  (D)  $\sqrt{\frac{3}{8}}\ell$

8. Three point particles of masses 10 kg, 1.5 kg and 2.5 kg are placed at there corners of a right angle triangle of sides 4.0 cm, 3.0 ;cm and 5.0 cm as shown in the figure. The centre of mass of the system is at a point:  
 (A) 0.6 cm right and 2.0 cm above 1 kg mass.  
 (B) 2.0 cm right and 0.9 cm above 1 kg mass.  
 (C) 1.5 cm right and 1.2 cm above 1 kg mass.  
 (D) 0.9 cm right and 2.0 cm above 1 kg mass.



9. Consider a circular coil of wire carrying constant current  $I$ , forming a magnetic dipole. The magnetic flux through an infinite plane that contains the circular coil and excluding the circular coil area is given by  $\phi$ . The magnetic flux through the area is given by  $\phi_0$ . Which of the following is correct?  
 (A)  $\phi_i = -\phi_0$  (B)  $\phi_i > \phi_0$   
 (C)  $\phi_i = \phi_0$  (D)  $\phi_i < \phi_0$

10. As shown in the figure, a bob of mass  $m$  is tied by a massless string whose other end portion is wound on a fly wheel (disc) of radius  $r$  and mass  $m$ . When released from rest the bob starts falling vertically. When it has covered a distance of  $h$ , the angular speed of the wheel will be

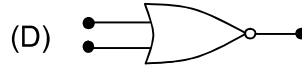
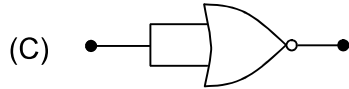
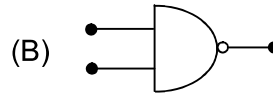
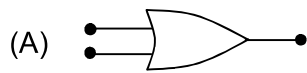


- (A)  $r\sqrt{\frac{3}{4gh}}$  (B)  $\frac{1}{r}\sqrt{\frac{2gh}{3}}$   
 (C)  $r\sqrt{\frac{3}{2gh}}$  (D)  $\frac{1}{r}\sqrt{\frac{4gh}{3}}$

11. If we need a magnification of 375 from a compound microscope of tube length 150 mm and an objective of focal length 5 mm, the focal length of the eye piece should be close to  
 (A) 22 mm (B) 33 m  
 (C) 12 m (D) 2 mm

12. Two moles of an ideal gas with  $\frac{C_P}{C_V} = \frac{5}{3}$  are mixed with 3 moles of another ideal gas with  $\frac{C_P}{C_V} = \frac{4}{3}$ . The value of  $\frac{C_P}{C_V}$  for the mixture is:  
 (A) 1.42 (B) 1.47  
 (C) 1.45 (D) 1.50
13. Speed of a transverse wave on a straight wire (mass 6.0 g, length 60 cm and area of cross-section  $1.0 \text{ mm}^2$ ) is  $90 \text{ ms}^{-1}$ . If the young's modulus of wire is  $16 \times 10^{11} \text{ Nm}^{-2}$ , the extension of wire over its natural length is:  
 (A) 0.03 mm (B) 0.01 mm  
 (C) 0.02 mm (D) 0.04 mm
14. A litre of dry air at STP expands adiabatically to a volume of 3 litres. If  $\gamma = 1.40$ , the work done by air is: ( $3^{1.4} = 4.6555$ ) [Take air to be an ideal gas]  
 (A) 48 J (B) 90.5 J  
 (C) 100.8 J (D) 60.7 J
15. A satellite of mass  $m$  is launched vertically upwards with an initial speed  $u$  from the surface of the earth. After it reaches height  $R$  ( $R =$  radius of the earth), it ejects a rocket of mass  $\frac{m}{10}$  so that subsequently the satellite moves in a circular orbit. The kinetic energy of the rocket is ( $G$  is the gravitational constant ;  $M$  is the mass of the earth)  
 (A)  $\frac{m}{20} \left( u - \sqrt{\frac{2GM}{3R}} \right)^2$  (B)  $\frac{3m}{8} \left( u + \sqrt{\frac{5GM}{6R}} \right)^2$   
 (C)  $\frac{m}{20} \left( u^2 - \frac{113}{200} \frac{GM}{R} \right)$  (D)  $5m \left( u^2 - \frac{119}{200} \frac{GM}{R} \right)$
16. The time period of revolution of electron in its ground state orbit in a hydrogen atom is  $1.6 \times 10^{-16} \text{ s}$ . The frequency of revolution of the electron in its first excited state (in  $\text{s}^{-1}$ ) is  
 (A)  $7.8 \times 10^{14}$  (B)  $1.6 \times 10^{14}$   
 (C)  $6.2 \times 10^{15}$  (D)  $5.6 \times 10^{12}$
17. A LCR circuit behaves like a damped harmonic oscillator. Comparing it with a physical spring-mass damped oscillator having damping constant 'b', the connect equivalence would be:  
 (A)  $L \leftrightarrow \frac{1}{b}, C \leftrightarrow \frac{1}{m}, R \leftrightarrow \frac{1}{k}$  (B)  $L \leftrightarrow k, C \leftrightarrow b, R \leftrightarrow m$   
 (C)  $L \leftrightarrow m, C \leftrightarrow \frac{1}{k}, R \leftrightarrow b$  (D)  $L \leftrightarrow m, C \leftrightarrow k, R \leftrightarrow b$
18. If the magnetic field in a plane electromagnetic wave is given by  $\vec{B} = 3 \times 10^{-8} \sin(1.6 \times 10^3 x + 48 \times 10^{10} t) \hat{j} \text{ T}$ , then what will be expression for electric field?  
 (A)  $\vec{E} = (60 \sin(1.6 \times 10^3 x + 48 \times 10^{10} t) \hat{k} \text{ V/m})$   
 (B)  $\vec{E} = (3 \times 10^{-8} \sin(1.6 \times 10^3 x + 48 \times 10^{10} t) \hat{i} \text{ V/m})$   
 (C)  $\vec{E} = (9 \sin(1.6 \times 10^3 x + 48 \times 10^{10} t) \hat{k} \text{ V/m})$   
 (D)  $\vec{E} = (3 \times 10^{-8} \sin(1.6 \times 10^3 x + 48 \times 10^{10} t) \hat{j} \text{ V/m})$

19. Which of the following given a reversible operation?



20. A 60 HP electric motor lifts an elevator having a maximum total load capacity of 2000 kg. If the frictional force on the elevator is 4000 N, the speed of the elevator at full load is close to: (1 HP = 746 W,  $g = 10 \text{ ms}^{-2}$ )

(A)  $1.5 \text{ ms}^{-1}$

(B)  $2.0 \text{ ms}^{-1}$

(C)  $1.7 \text{ m/s}^{-1}$

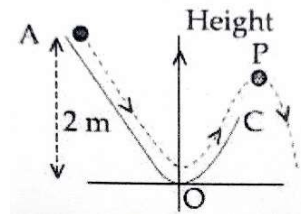
(D)  $1.9 \text{ m/s}^{-1}$

21. A Carnot engine operates between two reservoirs of temperatures 900 K and 300 K. The engine performs 1200 J of work per cycle. The heat energy (in J) delivered by the engine to the low temperature reservoir, in a cycle is \_\_\_\_\_.

22. A loop ABCDEFA of straight edges has six corner points A (0, 0, 0), B (5, 0, 0), C(5, 5, 0), D(0, 5, 0), E(0, 5, 5) and F(0, 0, 5). The magnetic field in this region in  $\vec{B} = (3\hat{i} + 4\hat{k})\text{T}$ . The quantity of flux through the loop ABCDEFA (in Wb) is \_\_\_\_\_.

23. A non-isotropic solid metal cube has coefficients of linear expansion as:  $5 \times 10^{-5} / ^\circ\text{C}$  along the x = axis and  $5 \times 10^{-6} / ^\circ\text{C}$  along the y and the z-axis. If coefficient of volume expansion of the solid  $C \times 10^{-6} / ^\circ\text{C}$  then the value of C is \_\_\_\_\_.

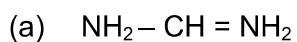
24. A particle ( $m = 1 \text{ kg}$ ) slides down a frictionless track (AOC) starting from rest of a point A (height 2 m). After reaching C, the particle continues to move freely in air as a projectile. When it leading its highest point P (height 1 m) the kinetic energy of the particle (in J) is: (Figure drawn is schematic and not to scale (take  $g = 10 \text{ ms}^{-2}$ ))



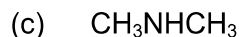
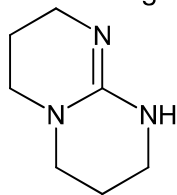
25. A beam of electromagnetic radiation of intensity  $6.4 \times 10^{-5} \text{ W/cm}^2$  is comprised of wavelength,  $\lambda = 310 \text{ nm}$ . It falls normally on a metal (work function  $\phi = 2 \text{ eV}$ ) of surface area  $1 \text{ cm}^2$ . If one in  $10^3$  photons ejects an electron, total number of electrons ejected in is  $10^x$ . ( $h_c = 1240 \text{ eVnm}$ ,  $1 \text{ eV} = 1.6 \times 10^{-19} \text{ J}$ ), then x is \_\_\_\_\_.

## **PART –B (CHEMISTRY)**

26. The relative strength of interionic/intermolecular forces in decreasing order is  
 (A) ion-dipole > dipole-dipole > ion-ion (B) dipole-dipole > ion-dipole > ion-ion  
 (C) ion-ion > ion-dipole > dipole-dipole (D) ion-dipole > ion-ion > dipole-dipole
27. Oxidation number of potassium in  $K_2O$ ,  $K_2O_2$  and  $KO_2$  respectively is  
 (A) +1, +2 and +4 (B) +2, +1 and  $+\frac{1}{2}$   
 (C) +1, +1 and +1 (D) +1, +4 and +2
28. At  $35^\circ C$ , the vapour pressure of  $CS_2$  is 512 mm of Hg and that of acetone is 344 mm of Hg. A solution of  $CS_2$  in acetone has a total vapour pressure of 600 mm of Hg. The false statement among the following is  
 (A)  $CS_2$  and acetone are less attracted to each other than to themselves  
 (B) Heat must be absorbed in order to produce the solution at  $35^\circ C$   
 (C) Raoult's law is not obeyed by this system  
 (D) a mixture of 100 mL  $CS_2$  and 100 mL acetone has a volume of < 200 mL
29. The atomic radius of Ag is closest to  
 (A) Ni (B) Cu  
 (C) Au (D) Hg
30. The dipole moments of  $CCl_4$ ,  $CHCl_3$  and  $CH_4$  are in the order  
 (A)  $CHCl_3 < CH_4 = CCl_4$  (B)  $CCl_4 < CH_4 < CHCl_3$   
 (C)  $CH_4 = CCl_4 < CHCl_3$  (D)  $CH_4 < CCl_4 < CHCl_3$
31. In comparison to the zeolite process for the removal of permanent hardness, the synthetic resins method is  
 (A) less efficient as it exchanges only anions  
 (B) more efficient as it can exchange only cations  
 (C) less efficient as the resin cannot be regenerated  
 (D) more efficient as it can exchange both cation as well as anions
32. Amongst the following statements, that which was not proposed by Dalton was  
 (A) matter consists of invisible atoms  
 (B) when gases combine or reproduced in a chemical reaction they do so in a simple ratio by volume provided all gases are at the same temperature & pressure  
 (C) chemical reactions involve reorganisation of atoms. These are neither created nor destroyed in a chemical reaction  
 (D) All the atoms of a given element have identical properties including identical mass. Atoms of different elements differ in mass
33. The increasing order of  $pK_b$  for the following compounds will be



(b)



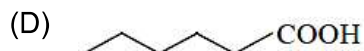
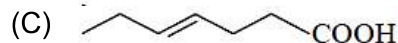
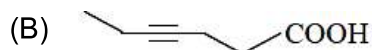
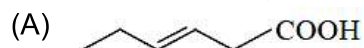
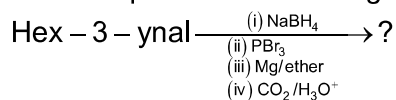
(A)  $b < c < a$

(B)  $c < a < b$

(C)  $b < a < c$

(D)  $a < b < c$

34. What is the product of following reaction?



35. The number of orbitals associated with quantum number  $n = 5$ ,  $m_s = +\frac{1}{2}$  is

(A) 15

(B) 11

(C) 50

(D) 25

36. The purest form of commercial iron is

(A) scrap iron and pig iron

(B) wrought iron

(C) cast iron

(D) pig iron

37. The theory that can completely/properly explain the nature of bonding in  $[\text{Ni}(\text{CO})_4]$  is

(A) Werner's theory

(B) Crystal field theory

(C) Molecular orbital theory

(D) Valence bond theory

38. The IUPAC name of the complex is  $[\text{Pt}(\text{NH}_3)_2\text{Cl}(\text{NH}_2\text{CH}_3)]\text{Cl}$  is

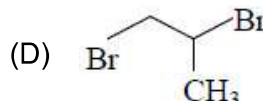
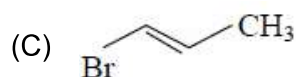
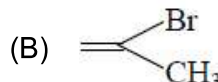
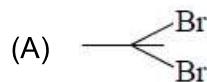
(A) Diamminechlorido(aminomethane)platinum(II)chloride

(B) Diamminechlorido(methanamine)platinum(II)chloride

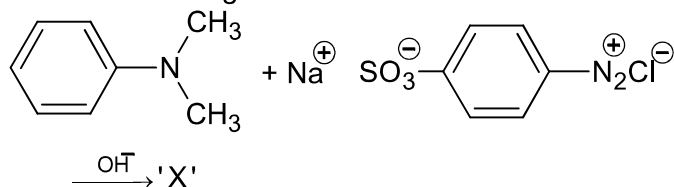
(C) Diammine(methanamine)chlorido platinum(II)chloride

(D) Bisammine(methanamine)chloride platinum(II)chloride

39. 1-methyl ethylene oxide when treated with an excess of HBr, produces



40. Consider the following reaction:



The product 'X' is used

(A) in protein estimation as an alternative to ninhydrin

(B) as food grade colourant

(C) in laboratory test for phenols

(D) in acid-base titration as an indicator

41. Match the following

Column – I	Column – II
(i) Riboflamin	(a) Beriberi
(ii) Thiamine	(b) Scurvy
(iii) Pyridoxine	(c) Cheilosis
(iv) Ascorbic acid	(d) Convulsions
(A) i → c, ii → a, iii → d, iv → b	(B) i → c, ii → d, iii → a, iv → b
(C) i → a, ii → d, iii → c, iv → b	(D) i → d, ii → b, iii → a, iv → c

42. Given that the standard potential ( $E^\circ$ ) of  $\text{Cu}^{2+}/\text{Cu}$  and  $\text{Cu}^+/\text{Cu}$  are 0.34 V and 0.522 V respectively, the  $E^\circ$  of  $\text{Cu}^{2+}/\text{Cu}^+$  is

- (A) -0.158 V (B) 0.182 V  
(C) +0.158 V (D) -0.182 V

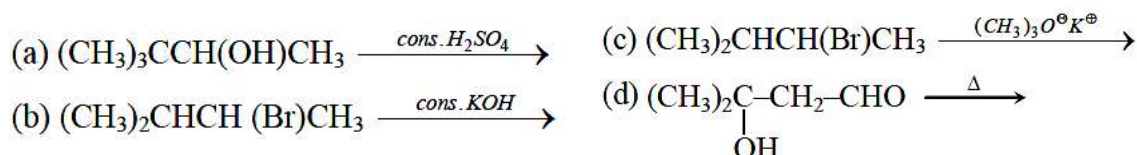
43. A solution of m-chloroaniline, m-chlorophenol and m-chlorobenzoic acid in ethyl acetate was extracted initially with a saturated solution of  $\text{NaHCO}_3$  to give fraction A. The left over organic phase was extracted with dilute  $\text{NaOH}$  solution to give fraction B. The final organic layer was labelled as fraction C. Fraction A, B and C contain respectively

- (A) m-chlorobenzoic acid, m-chlorophenol and m-chloroaniline  
(B) m-chlorophenol, m-chlorobenzoic acid and m-chloroaniline  
(C) m-chlorobenzoic acid, m-chloroaniline and m-chlorophenol  
(D) m-chloroaniline, m-chlorobenzoic acid and m-chlorophenol

44. The order of electron gain enthalpy in kJ/mol of fluorine, chlorine, bromine and iodine, respectively are

- (A) -333, -325, -349 and -296 (B) -333, -349, -325 and -296  
(C) -349, -333, -325 and -296 (D) -296, -325, -333 and -349

45. Consider the following reactions, which of these reaction(s) will not produce Saytzeff product?



Which of these reaction(s) will not produce Saytzeff product?

- (A) (b) and (d) (B) (c) only  
(C) (a), (c) and (d) (D) (d) only

46. Two solutions A and B, each of 100 L was made by dissolution of 4g of  $\text{NaOH}$  and 9.8 g of  $\text{H}_2\text{SO}_4$  in water, respectively. The pH of the resultant solution obtained from mixing 40 L of solution A and 10 L of solution B is

47. During the nuclear explosion, one of the product of  $^{90}\text{Sr}$  with half life of 6.93 years. If 1  $\mu\text{g}$  of  $^{90}\text{Sr}$  absorbed in the bones of newly born baby in place of  $\text{Ca}$ , how much time, in years is required to reduce it by 90% if it is not lost metabolically

48. Chlorine reacts with hot and concentrated  $\text{NaOH}$  and produces compound(X) and (Y). Compound(X) gives white precipitate with silver nitrate solution. The average bond order between  $\text{Cl}$  and  $\text{O}$  atoms in (Y) is



49. The number of chiral carbons in chloramphenicol is

50. For the reaction  $A(l) \longrightarrow 2B(g)$

$\Delta U = 2.1 \text{ Kcal}$ ,  $\Delta S = 20 \text{ cal K}^{-1}$  at 300 K

Hence  $\Delta G$  in Kcal is

## **PART-C (MATHEMATICS)**

51. If  $f(a + b + 1 - x) = f(x)$ , for all  $x$ , where  $a$  and  $b$  are fixed positive real numbers, then  $\frac{1}{a+b} \int_a^b x(f(x) + f(x+1)) dx$  is
- (A)  $\int_{a+1}^{b+1} f(x) dx$  (B)  $\int_{a-1}^{b-1} f(x) dx$   
(C)  $\int_{a-1}^{b-1} f(x+1) dx$  (D)  $\int_{a+1}^{b+1} f(x+1) dx$
52. Let the function,  $f : [-7, 0] \rightarrow \mathbb{R}$  be continuous on  $[-7, 0]$  and differentiable on  $(-7, 0)$ . If  $f(-7) = -3$  and  $f'(x) \leq 2$ , for all  $x \in (-7, 0)$ , then for all such functions  $f$ ,  $f(-1) + f(0)$  lies in the interval:
- (A)  $[-3, 11]$  (B)  $(-\infty, 20]$   
(C)  $[-6, 20]$  (D)  $(-\infty, 11]$
53. If the distance between the foci of an ellipse is 6 and the distance between its directrices is 12, then the length of its latus rectum is:
- (A)  $\sqrt{3}$  (B)  $3\sqrt{2}$   
(C)  $\frac{3}{\sqrt{2}}$  (D)  $2\sqrt{3}$
54. An unbiased coin is tossed 5 times. Suppose that a variable  $X$  is assigned the value  $k$  when  $k$  consecutive heads are obtained for  $k = 3, 4, 5$ , otherwise  $X$  takes the value  $-1$ . Then the expected value of  $X$ , is
- (A)  $-\frac{3}{16}$  (B)  $-\frac{1}{8}$   
(C)  $\frac{1}{8}$  (D)  $\frac{3}{16}$
55. Five numbers are in A.P., whose sum is 25 and product is 2520. If one of these five numbers is  $-\frac{1}{2}$ , then the greatest number amongst them is:
- (A) 7 (B)  $\frac{21}{2}$   
(C) 16 (D) 27
56. If the system of linear equations  $2x + 2ay + az = 0$ ,  $2x + 3by + bz = 0$ ,  $2x + 4cy + cz = 0$  where  $a, b, c \in \mathbb{R}$  are non-zero and distinct; has a non-zero solution, then:
- (A)  $a + b + c = 0$  (B)  $a, b, c$  are in A.P.  
(C)  $\frac{1}{a}, \frac{1}{b}, \frac{1}{c}$  are in A.P. (D)  $a, b, c$  are in G.P.

57. Let P be a plane passing through the points (2, 1, 0), (4, 1, 1) and (5, 0, 1) and R be any point (2, 1, 6). Then the image of R in the plane P is:  
 (A) (6, 5, 2) (B) (4, 3, 2)  
 (C) (6, 5, -2) (D) (3, 4, -2)

58. If  $\operatorname{Re}\left(\frac{z-1}{2z+i}\right) = 1$ , where  $z = x + iy$ , then the point (x, y) lies on a:

- (A) straight line whose slope is  $\frac{3}{2}$  (B) circle whose diameter is  $\frac{\sqrt{5}}{2}$   
 (C) straight line whose slope is  $-\frac{2}{3}$  (D) circle whose centre is at  $\left(-\frac{1}{2}, -\frac{3}{2}\right)$

59. If  $y(\alpha) = \sqrt{2\left(\frac{\tan\alpha + \cot\alpha}{1 + \tan^2\alpha}\right) + \frac{1}{\sin^2\alpha}}$ ,  $\alpha \in \left(\frac{3\pi}{4}, \pi\right)$  then  $\frac{dy}{d\alpha}$  at  $\alpha = \frac{5\pi}{6}$  is:

- (A) 4 (B)  $-\frac{1}{4}$   
 (C) -4 (D)  $\frac{4}{3}$

60. Let  $\alpha$  be a root of the equation  $x^2 + x + 1 = 0$  and the matrix  $A = \frac{1}{\sqrt{3}} \begin{bmatrix} 1 & 1 & 1 \\ 1 & \alpha & \alpha^2 \\ 1 & \alpha^2 & \alpha^4 \end{bmatrix}$ ,

then the matrix  $A^{31}$  is equal to:

- (A)  $A^3$  (B) A  
 (C)  $I_3$  (D)  $A^2$

61. If  $g(x) = x^2 + x - 1$  and  $(g \circ f)(x) = 4x^2 - 10x + 5$ , then  $f\left(\frac{5}{4}\right)$  is equal to

- (A)  $\frac{3}{2}$  (B)  $\frac{1}{2}$   
 (C)  $-\frac{3}{2}$  (D)  $-\frac{1}{2}$

62. If  $y = mx + 4$  is a tangent to both the parabolas,  $y^2 = 4x$  and  $x^2 = 2by$ , then b is equal to:

- (A) -32 (B) -128  
 (C) -64 (D) 128

63. The logical statement  $(p \Rightarrow q) \wedge (q \Rightarrow \sim p)$  is equivalent to:

- (A)  $\sim q$  (B) p  
 (C) q (D)  $\sim p$

64. Let  $x^k + y^k = a^k$ , ( $a, k > 0$ ) and  $\frac{dy}{dx} + \left(\frac{y}{x}\right)^{\frac{1}{3}} = 0$ , then  $k$  is:
- (A)  $\frac{3}{2}$  (B)  $\frac{4}{3}$   
 (C)  $\frac{1}{3}$  (D)  $\frac{2}{3}$
65. Let  $\alpha$  and  $\beta$  be two real roots of the equation  $(k+1)\tan^2 x - \sqrt{2} \cdot \lambda \tan x = (1-k)$ , where  $k (\neq -1)$  and  $\lambda$  are real numbers. If  $\tan^2(\alpha + \beta) = 50$ , then a value of  $\lambda$  is:
- (A) 10 (B) 5  
 (C)  $5\sqrt{2}$  (D)  $10\sqrt{2}$
66. If  $y = y(x)$  is the solution of the differential equation,  $e^y \left(\frac{dy}{dx} - 1\right) = e^x$  such that  $y(0) = 0$ , then  $y(1)$  is equal to:
- (A)  $1 + \log_e 2$  (B)  $2e$   
 (C)  $\log_e 2$  (D)  $2 + \log_e 2$
67. The area of the region, enclosed by the circle  $x^2 + y^2 = 2$ , which is not common to the region bounded by the parabola  $y^2 = x$  and the straight line  $y = x$ , is :
- (A)  $\frac{1}{3}(12\pi - 1)$  (B)  $\frac{1}{3}(6\pi - 1)$   
 (C)  $\frac{1}{6}(12\pi - 1)$  (D)  $\frac{1}{6}(24\pi - 1)$
68. A vector  $\vec{a} = \alpha \hat{i} + 2\hat{j} + \beta \hat{k}$  ( $\alpha, \beta \in \mathbb{R}$ ) lies in the plane of the vectors,  $\vec{b} = \hat{i} + \hat{j}$  and  $\vec{c} = \hat{i} - \hat{j} + 4\hat{k}$ . If  $\vec{a}$  bisects the angle between  $\vec{b}$  and  $\vec{c}$ , then:
- (A)  $\vec{a} \cdot \hat{k} + 4 = 0$  (B)  $\vec{a} \cdot \hat{k} + 2 = 0$   
 (C)  $\vec{a} \cdot \hat{i} + 3 = 0$  (D)  $\vec{a} \cdot \hat{i} + 1 = 0$
69. The greatest positive integer  $k$ , for which  $49^k + 1$  is a factor of the sum  $49^{125} + 49^{124} + \dots + 49^2 + 49 + 1$ , is:
- (A) 65 (B) 63  
 (C) 32 (D) 60
70. Total number of 6 – digit numbers in which only and all the five digits 1, 3, 5, 7 and 9 appear, is
- (A)  $5^6$  (B)  $6!$   
 (C)  $\frac{5}{2}(6!)$  (D)  $\frac{1}{2}(6!)$

71. Let  $S$  be the set of points where the function,  $f(x) = |2 - |x - 3||, x \in \mathbb{R}$ , is not differentiable. Then  $\sum_{x \in S} f(f(x))$  is equal to \_\_\_\_\_
72. If the sum of the coefficients of all even powers of  $x$  in the product  $(1 + x + x^2 + \dots + x^{2n})(1 - x + x^2 - x^3 + \dots + x^{2n})$  is 61, then  $n$  is equal to \_\_\_\_\_
73. If the variance of the first  $n$  natural numbers is 10 and the variance of the first  $m$  even natural numbers is 16, then  $m + n$  is equal to \_\_\_\_\_
74.  $\lim_{x \rightarrow 2} \frac{3^x + 3^{3-x} - 12}{3^{-x/2} - 3^{1-x}}$  is equal to \_\_\_\_\_
75. Let  $A(1,0), B(6,2)$  and  $C\left(\frac{3}{2}, 6\right)$  be the vertices of a triangle  $ABC$ . If  $P$  is a point inside the triangle  $ABC$  such that the triangles  $APC, APB$  and  $BPC$  have equal areas, then the length of the line segment  $PQ$ , where  $Q$  is the point  $\left(-\frac{7}{6}, -\frac{1}{3}\right)$  is \_\_\_\_\_

# JEE (Main) – 2020

## ANSWERS

### PART A – PHYSICS

1.	A	2.	A	3.	D	4.	C
5.	A	6.	C	7.	B	8.	D
9.	A	10.	D	11.	A	12.	A
13.	A	14.	B	15.	D	16.	A
17.	C	18.	C	19.	C	20.	D
21.	600	22.	175	23.	60	24.	10
25.	11						

### PART B – CHEMISTRY

26.	C	27.	C	28.	D	29.	C
30.	C	31.	B	32.	B	33.	B
34.	C	35.	D	36.	B	37.	D
38.	B	39.	D	40.	D	41.	A
42.	C	43.	A	44.	B	45.	B
46.	10.60	47.	23.03	48.	1.67	49.	2
50.	-2.70						

### PART C – MATHEMATICS

51.	C	52.	B	53.	B	54.	D
55.	C	56.	C	57.	C	58.	B
59.	A	60.	A	61.	D	62.	B
63.	D	64.	D	65.	A	66.	A
67.	C	68.	B	69.	B	70.	C
71.	3	72.	30	73.	18	74.	36
75.	5						